

# Super Deep -65°C Low Temperature Freezer



## Features

- Flat White Lid
- Quickly And Deeply Freezing.
- long life, ideal for storing tuna fish for sushi
- Microcomputer control, digital display box temperature, **-55°C ~ -65°C**.
- High and low temperature alarm control, alarm temperature point can be set as required.
- Two kinds of alarm system: high and low temperature alarm, sensor fault alarm.
- Multiple protection functions: start delay, stop interval, extend product service life.
- International famous compressor, fast refrigeration.
- Thickened insulation layer, super micro-porous foaming technology, good insulation effect.
- No fluorine foaming, no fluorine refrigerant, green environmental protection.
- It adopts single machine auto cascade refrigeration system with compact structure.
- The backstage real-time monitoring box temperature, timely arrangement of after-sales service, to avoid economic loss.
- Safety lock design to prevent opening at will.
- Wide voltage design, suitable for use in voltage unstable areas.
- High quality per-coated liner design, drainage holes at the bottom of the box, convenient for cleaning
- Drainage Is On Front, Easy To Collect Water.
- Stealthily Handle, Strong And Not Easy To Broken In Kitchen.
- Internal Round Edges, Easy To Clean.
- Balanceable Hinges Of The Door, Freely Stop From 35° To 70° Angle.



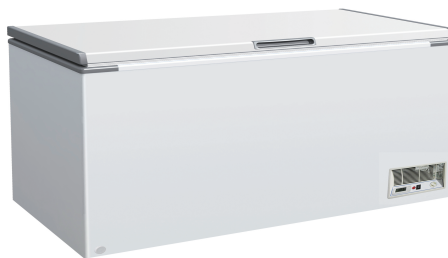
SF-27F



SF-36F



SF-45F



SF-58F



## Specifications

SUPER FREEZER								
MODEL	Ext. Dimensions W X D X H (In)	Int.. Dimensions W X D X H (In)	CAPACITY L/Sq-ft	V/Hz/Ph	BASKET	NET WEIGHT LBS	GROSS WEIGHT LBS	NEMA PLUG
SF-27F	27X22.84X34.5		90L	115V/60HZ/1	1	104	117	5-15P
SF-36F	35.9X29.5X34.5		190L	115V/60HZ/1	1	124	141	5-15P
SF-45F	44.7X29.5X34.5		260L	115V/60HZ/1	1	161	185	5-15P
SF-58F	58.1X29.5X34.5		365L	115V/60HZ/1	1	181	212	5-15P



Certified To ANSI/NSF 7 Standards

If the data and structure update, without notice, subject to material object.